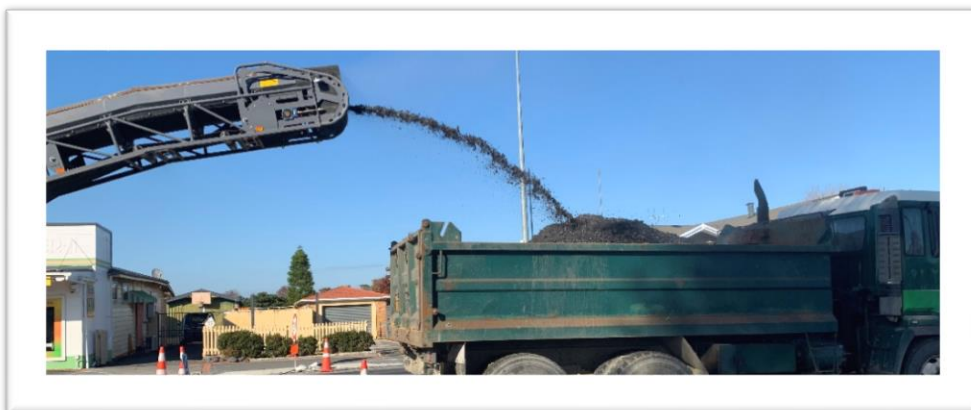


SH2 Ngatea main street programme update

Friday 1 May 2020

Week one and it's a good start to the restart of Ngatea's main street upgrade.

With the fine weather and limited traffic on the street our contractors have been able to remove the existing road surface from most of the parking bays in preparation for the new asphalt surface; trimmed up the asphalt pavement layers in preparation for the new asphalt surface; installed the drainage outside Subway; undertaken a significant amount of kerb & channel preparation ahead of concrete pours scheduled for next week.



Safety first

Access through the town is open for two-way traffic as we're using a Stop/Go system but that means – as we adhere to Covid19 health and safety guidelines – you'll probably see more staff on site. As well as moving traffic through the town they'll be helping people access off-street parking areas and side roads. Please, always take care and follow the instructions of traffic management crews.

You'll also notice a range of new measures in place, including restricted access to sites, requirements for workers to maintain physical distancing, and the use of additional protective clothing. Please don't approach the crews on site. If you have a question email us: ngatea@higgins.co.nz.

What's happening next week?

Our focus for the next week is the completion of the concrete dish channel in front of Hammer Hardware; pouring concrete for much of the remaining Council kerb & channel work on the active site; commence the construction of the culvert crossings in the westbound lane of Stage 3 (between the Farm Source and Kohunui Street); and completing the remaining parking bay preparation followed by the start of asphalt surfacing of the parking bays.

How long will the work take?

We expect this work to be completed by late June, hopefully mid-June. It's longer than our end of May proposed date but that's because we have additional restrictions to manage as we work to COVID-19 health and safety protocols, and we're operating stop/go traffic management to keep traffic flowing.

This is a unique situation and the blend of all these conditions could push our timeframe out slightly, but we'll let you know if we're heading in that direction. Unfortunately, because of the cooler weather we won't be able to complete the pavement construction and final surfacing of the westbound traffic lane between the Ngatea Primary School/Farm Source and Kohunui Street, so we'll need to come back in summer. But we'll keep you updated on this activity once we have more detail.

Stay updated

- Visit www.nzta.govt.nz/traffic-and-travel-information
- Follow NZTA on Facebook www.facebook.com/NZTAWaikatoBoP
- Follow HDC on Facebook www.facebook.com/haurakidistrictcouncil
- Council website <https://weneedtotalk.hauraki-dc.govt.nz>

Thank you for your co-operation.

Remember, stay home stay safe, and most importantly, be kind.

Cara Lauder

Manager, Systems Management Waikato